

We are part of the solution.

Abema supports Brazilian States and our People.



“Climate change impacts the entire society, and facing it requires multilevel governance with actions on a global, regional and local scale.”

Letter from Abema, Brazilian Conference on Climate Change, November 2019.

Abema supports Brazilian states that believe in joint solutions by representing subnational governments, institutions, and individuals. Together, we have written a Letter of Commitments for the Climate and work to implement it and monitor its progress. We are part of the solution.

This document contains information about Abema, about the importance of having a partner who can act locally in Brazil and about the possibilities of working together on projects and initiatives for the climate and biodiversity.

Brazil's multiple partners

Frost. Flood. drought. Clouds of dust. Bushfire. Climate emergency accelerates and intensifies events in Brazil and around the world, presenting challenges of all kinds at the global and national level – political, administrative, operational, technical, scientific, financial and economic challenges.

World leaders have already pledged their commitment to the Paris Agreement, sharing the understanding that the response to those challenges needs to be coordinated. At Abema, we see Brazil important as an important player due to its relevance for the climate and biodiversity; and position ourselves part of the solution to climate challenges.

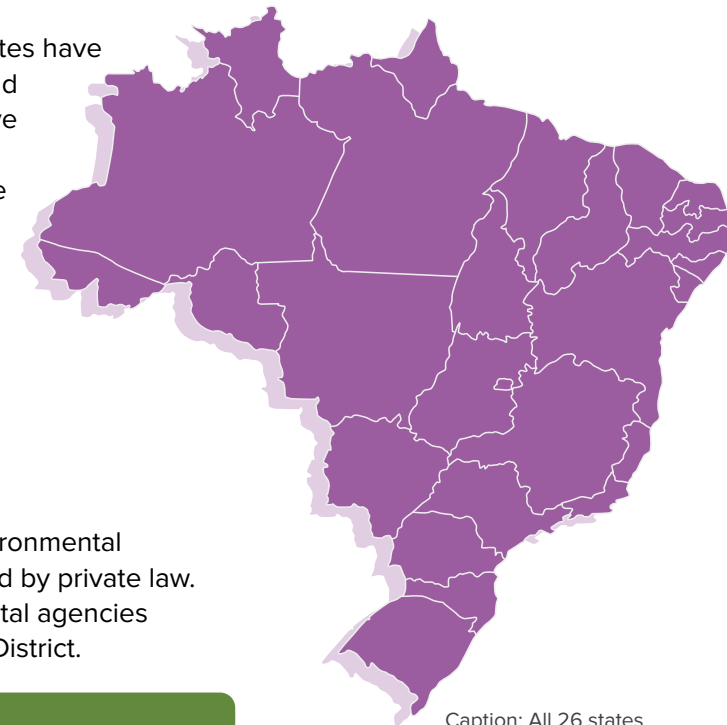
In addition to national proposals, Brazilian states have the autonomy to implement environmental and climate policies. Subnational experiences have multiplied over the last few decades.

We are an Association of state-level executive authorities and environmental agencies who work together with multiple players that have local expertise and experience. We connect people and their history to solutions that consider local contexts.

A Abema

We are the Brazilian Association of State Environmental Entities, a non-profit civil association governed by private law. We have representatives of state environmental agencies from the 26 Brazilian States and the Federal District.

The 27 secretaries of state for the environment and 21 autarchies and foundations, responsible for implementing environmental policy are part of Abema. Our associates are in charge of the bulk of administrative acts, environmental licenses and authorizations, in addition to many other instruments of the National Environmental Policy in Brazil.



Caption: All 26 states and the Federal District have representatives from state environmental agencies at Abema.



Abema Highlights

1981 Creation of the National Council for the Environment, CONAMA (Federal Law nº 6.938/81). CONAMA is the consultative and deliberative body of the National Environment System.

1985 Abema is founded, before the Federal Constitution of 1988. Beginning of redemocratization in Brazil. We are closely connected to CONAMA.

Brazilian Federal Constitution, 1988. Article 225.

“Everyone has the right to an ecologically balanced environment, a good for common use by the people and essential to a healthy quality of life, imposing on the public authorities and the community the duty to defend and preserve it for present and future generations.”

1988 Abema contributes to the process of consolidating environmental policy with the decentralization of activities, formerly concentrated at the federal level. Emphasis on the discussions on the environment, inserted in a special chapter of the Federal Constitution of 1988 (chapter VI, art. 225).

1997 Construction, discussion, and approval of relevant Conama Resolutions, with emphasis on Resolutions 01/1986 and 237/1997 that guide Brazilian environmental licensing to date.

2004 Contribution to the construction of the General Environmental Licensing Law Project – PL 3.729/2004.

2015 Contribution to the construction of the Open Letter to Brazil by the Forum for Corporate Action for the Climate

2019 Creation of the Technical Climate Chamber (CT Clima Abema), which supports compliance with the Brazilian Nationally Determined Contributions (NDCs).

Charter of the State Environmental Agencies for the Climate, ratified by the 26 states and the Federal District during the Brazilian Conference on Climate Change

The 17 commitments signed in the Abema Charter

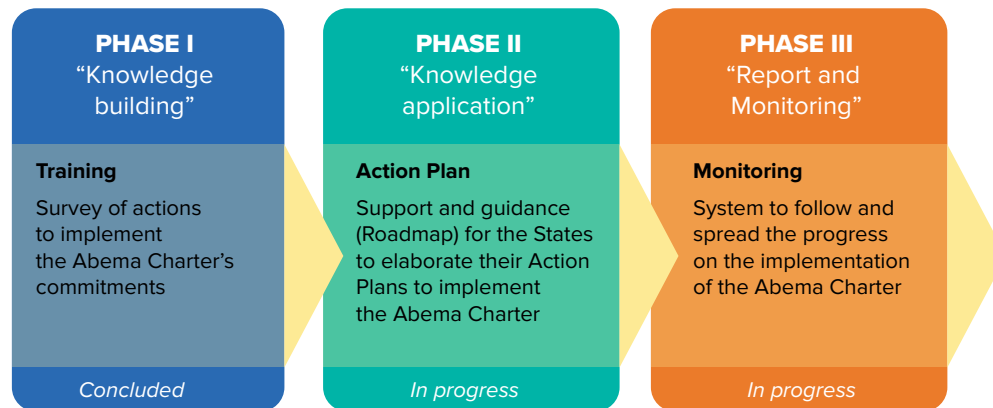
1. Undertake joint actions to address global climate change, encouraging the exchange of information, knowledge for innovation and good practices.
2. Establish state contributions to the achievement of the Brazilian NDC and the Paris Agreement goals.
3. Institutionalize budget and planning, the climate agenda in the States.
4. Create, implement, monitor, and report measures to combat climate change, through a normative framework, forums, GHG inventory, adaptation plans to adverse effects and emission mitigation.
5. Establish that other policies and management instruments incorporate the guidelines to fight climate change.
6. Make efforts to implement the Forest Code in the States and the Federal District, making effective the mechanisms established by the CAR and the PRA, so that the Permanent Preservation Areas and Legal Reserves fulfill their environmental function.
7. Strengthen policies and measures aimed at achieving zero illegal deforestation and offsetting greenhouse gas emissions from legal vegetation clearing.
8. Set targets for reforestation and forest restoration and other incentive policies.
9. Support the preparation of the State Plan for Low Carbon Emission Agriculture (ABC Plan), support the implementation of sustainable management systems for native forests and promote the implementation of crop-livestock-forest integration systems.
10. Strengthen Conservation Units' governance actions.
11. Support and implement the carbon market.
12. Adopt energy efficiency actions in public buildings.
13. Establish incentive policies for the generation and use of renewable energy sources.
14. Promote policies aimed at new standards of clean technologies, energy efficiency and low carbon infrastructure in the industrial sector.
15. Encourage active mobility, the use of public transport, improvements in vehicle efficiency and the adoption of renewable energy in the public fleet.
16. Establish sustainable public procurement policies.
17. Encourage climate education in public schools and universities, in addition to publicizing measures to combat climate change to society



Learn how Abema implements and monitors commitments

Start a process, prepare it. Strategically consolidate implementation. Initiatives start and are monitored and evaluated promoting state leadership in contributing to the Brazilian NDCs. This is the objective for the commitments and, so that the implementation takes place in an organized way and can be evaluated and monitored, Abema's CT Clima has established a Work Plan, with 3 phases: I. Building Knowledge, II. Applying Knowledge and III. Monitoring and Reporting.

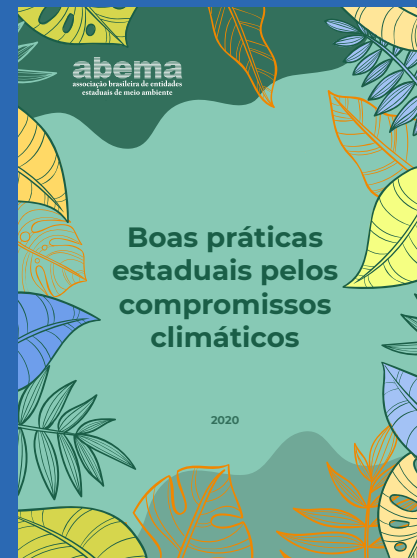
The work plan at a glance:



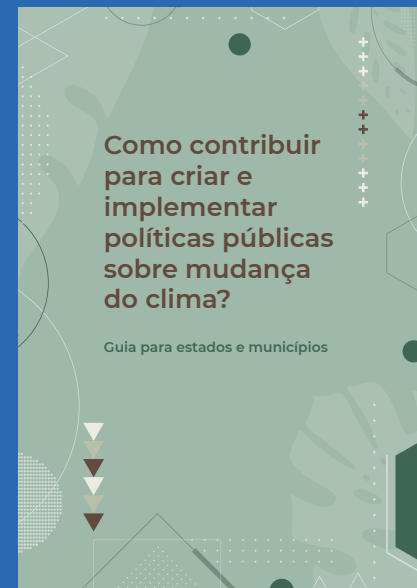
The first stage began with a survey of actions that have already been carried out and successfully implemented in Brazil. A survey was carried out in 2020, accompanied by webinars, to identify these actions and categorize them, resulting in the publication of good practices. Therefore, in addition to the exchange and the learning provided, it was possible to know how the commitments can be implemented in practice.

Also at this stage, the SPIPA project supported a debate on the competences of the different government levels of government to create and implement public policy on climate change. This joint effort has resulted in two publications: State and Municipal Competences for Creating and Executing Policies Public on Climate Change and its handbook: How to contribute to creating and implementing public policy on climate change.

Publicações



[Click here for the publication "Good State Practices for Climate Commitments" \(in Portuguese\).](#)



[Click here for the publication "How to contribute to creating and implementing public policies on climate change? – guide for states and municipalities" \(in Portuguese\).](#)

For the Applying Knowledge phase, Abema's CT Clima has been working on a roadmap (inspired by a tool developed by the state of Minas Gerais, 'Climate in Practice') that lays out 4 main phases to implement the 17 commitments:

- 1 Start:** preparing to roll out the initiative to implement actions, a stage preliminary to the real change or action. Mostly, it refers to awareness raising activities, data collection or preliminary diagnosis.
- 2 Consolidate:** actual implementation starts here. With all the necessary information in hand, the State can define action strategies and preliminary tasks.
- 3 Roll Out:** this phase continues the previous one and is generally related to the actual implementation of activities proposed by the action.
- 4 Role Modelling:** this stage indicates that the state occupies a leadership position, being a model for other governments and institutions.

CDP

At the third phase of the work plan, to know and monitor the actions of the states to implement the Abema charter, data reported by the states and the Federal District on the Carbon Disclosure Project platform, the CDP is under analysis. This analysis will soon be available on the Abema website.

The information analysis from the States on the CDP platform shows that states are already contributing to advancing the climate agenda. Most of the actions developed by the states are related to the land use sector, with actions aimed at the conservation and recovery of forest cover. There is great effort and concern with the establishment of governance and collaboration instruments to implement the climate agenda. We understand that it is necessary to mobilize multiple actors, combined with development and access to climate finance to support the progress of the climate agenda at the subnational level.

As recommended in the Abema letter, the states have a *"strategic role in promoting adaptation to climate events, as well as in the adoption of a low-carbon development model, with the reduction of greenhouse gas emissions, associated with the creation of jobs, conservation of natural resources, reduction of inequalities and expansion of social progress"*.

Designing and using monitoring and evaluation tools is essential for continued, sustained progress that allows for bolder steps. We aim to effectively fulfill the *"responsibility to provide a safer and more responsible environment for generations to come"*.

We have built important partnerships with local and international institutions along our journey, particularly with the *Deutsche Gesellschaft für Internationale Zusammenarbeit (GIZ) GmbH*. We understand that only through multilevel, multisectoral and collaborative work will it be possible to advance in the implementation of the climate agenda.



We are committed to the environment and the people. To learn more about our initiatives, visit our website (in Portuguese). Let's build new paths to implement the climate agenda. Together.

Stay in touch!

<https://www.abema.org.br>

abema@abema.org.br

SHS Quadra 6, Conjunto A, Bloco E, Sala 513
Ed. Brasil 21, Asa Sul, Brasília-DF, CEP: 70316-100

<https://www.facebook.com/AbemaOficial/>

<https://twitter.com/abemaoficial>

abema
associação brasileira de entidades
estaduais de meio ambiente

giz Deutsche Gesellschaft
für Internationale
Zusammenarbeit (GIZ) GmbH